



AGENDA

- Adroit Technologies Company
- MAPS References
- MAPS SCADA and HMI Overview
- MAPS Process Suite
- Alarm Management
- SCADA Intelligence

- South African Software Company, Mitsubishi Factory Automation Supplier for Sub-Saharan Africa
- Mitsubishi Electric own 14.9% of the shares of Adroit Technologies
- Been developing real-time SCADA software for more than **25** years
- Employs around **70** people
- Global supplier in **5** continents, **14** countries
- European Mitsubishi Electric Software Partner
- Over **15000** Licensed Seats, more than a **1500** unique customers worldwide.

- **MAPS Licenses sold in Europe:**

- | | |
|---|----------------------------|
| • FY 2013: (June 2012 to March 2013) | : 91 |
| • FY 2014 (April 2013 to March 2014) | : 140 |
| • Started the new FY 2015 (April) | : 45 (in one month) |



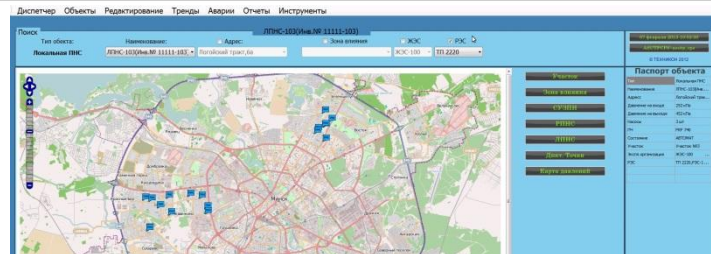
- Petrochemical
- Pulp and Paper
- Food and Beverage
- Energy Management
- Building Management
- Water Treatment/Distribution
- Agriculture
- Power Utilities
- Nuclear
- Cement
- Automotive
- Mining
- Oil and Gas
- Telecommunications

MAPS /
MAPS SCADA /
MAPS HMI

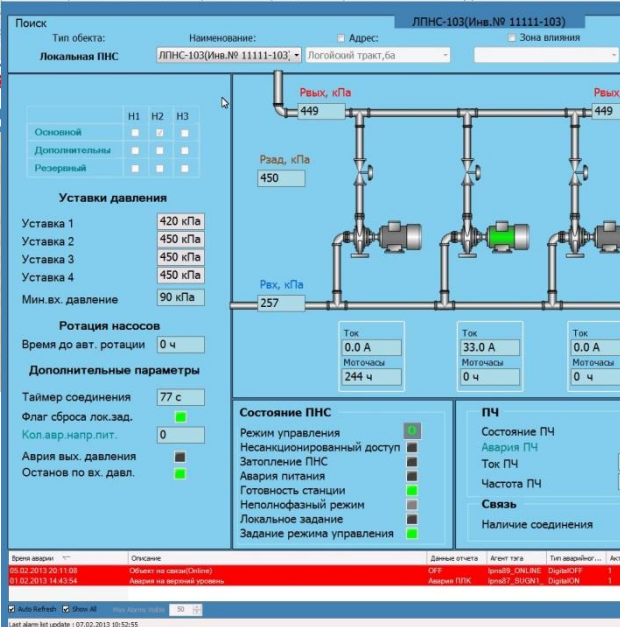
ENTERPRISE REPORTING



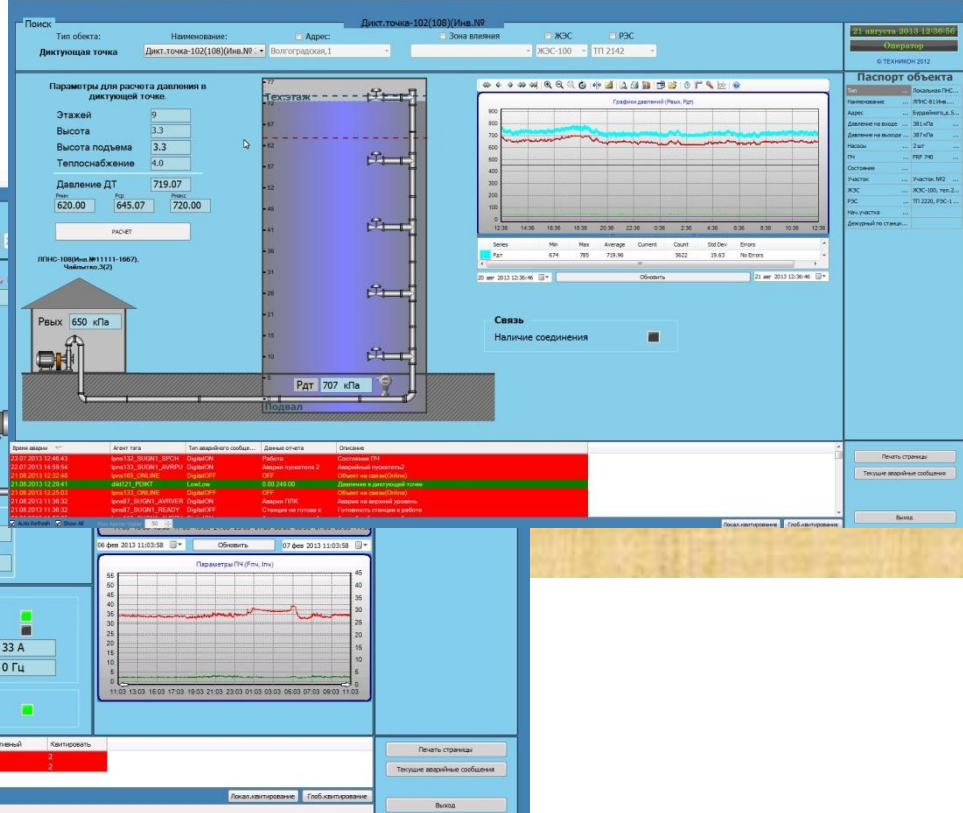
OPERATIONAL ANALYSIS
AND SCADA SYSTEM REPORTING



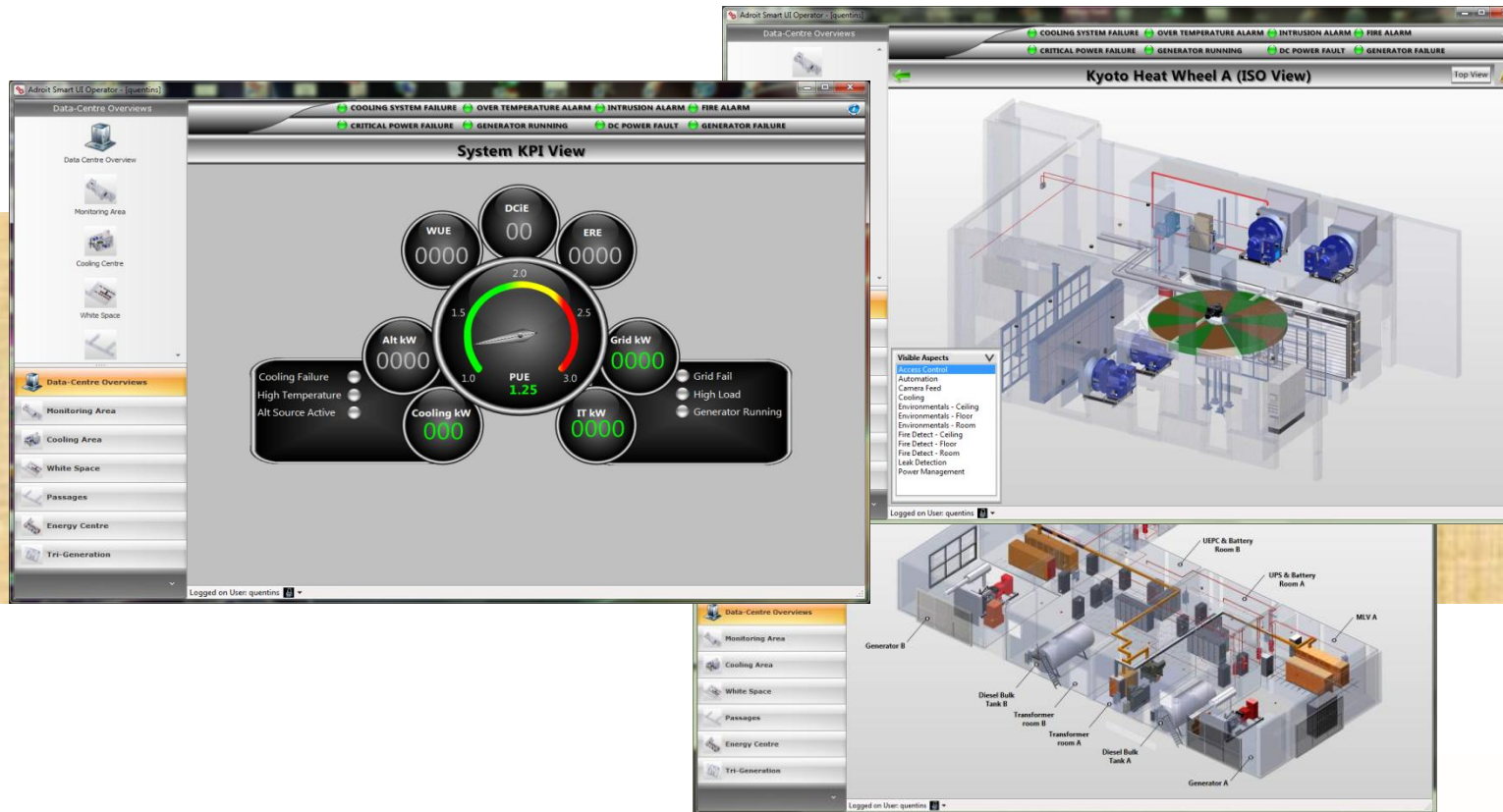
Диспетчер Объекты Редактирование Тренды Аварии Отчеты Инструменты



Диспетчер Объекты Редактирование Тренды Аварии Отчеты Инструменты



Project will have more than 50 MAPS licenses when completed!




Instant Visual indication to identify alarms at treatment plants




This is based on a traffic light sequence:

- Green – All Healthy (Plant Running OK)
- Red – Alarm Active (Action Required)
- Amber – Communication Problem (GPRS, Broadband, PLC Comms.)

- EPA Data Capture Information and Automatic Reporting



EPA Data Capture: Kilcoole



[View Report](#)

Incidents
Complaints
Overflows
Effluent Parameters
Influent Parameters
Upstream Monitoring
Downtown Monitoring

[Incidents]
1 of 21
Filter
Find:

DateTime: 2012/11/19 17:30

Author: Dave Dunne

Details: Power Failure occurred on site / duration 2 hours, high sump level / overflow condition.

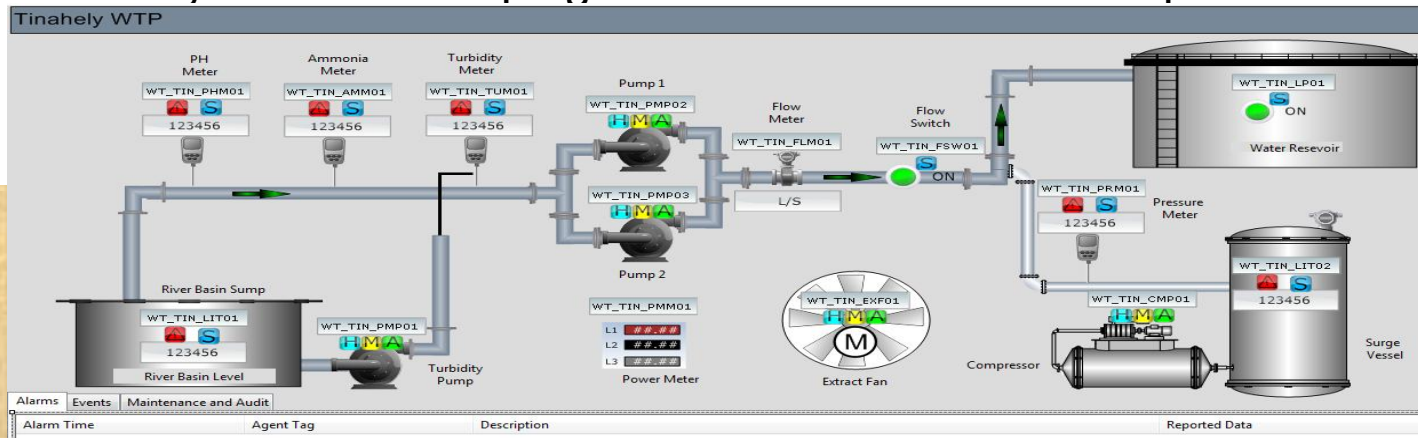
Incident Type:

Action: Poewr Restored and Level Pumped down to normal levels.

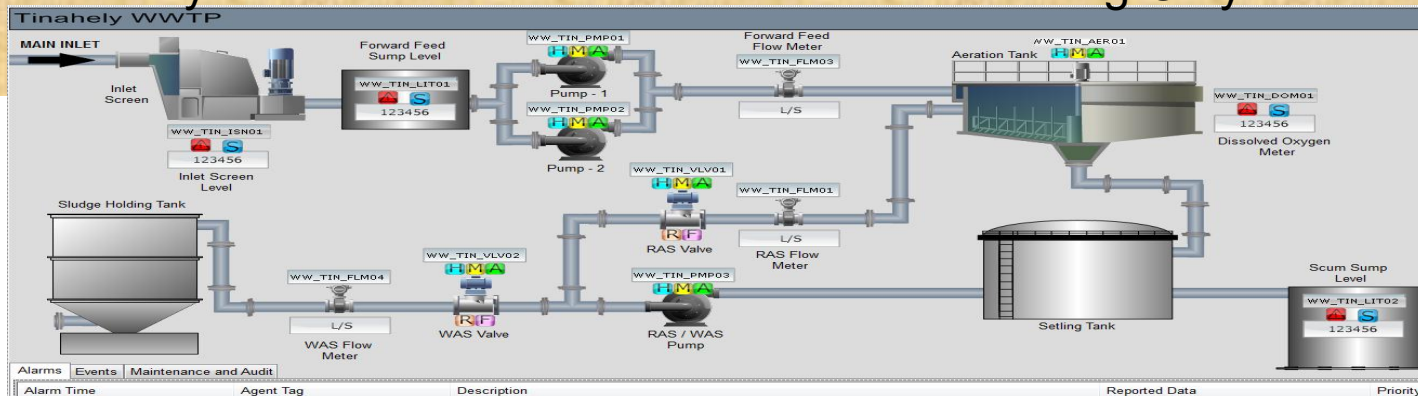
Closed: ☒

idx	DateTime	Author	Incident Type	Details	Action	Closed
21	2012/11/19 05:43 PM	Rob Joyce	Other	Level Switch replaced with Probeset	Maintenance refit	<input checked="" type="checkbox"/>
20	2012/11/19 05:30 PM	Dave Dunne	Other	Pump Switched Out for Maintenabce	Pump Repired	<input checked="" type="checkbox"/>
19	2012/11/19 03:13 PM	Carl	Other	Working	Testing Worked	<input checked="" type="checkbox"/>
18	2012/11/19 03:11 PM	treew	Non-Compliance	hhhhh	ssss	<input checked="" type="checkbox"/>
17	2012/09/28	Niaal	Non-Compliance	Spilled	Gathered	<input checked="" type="checkbox"/>
16	2012/09/28	Bradc		Emissions	Emmissions	<input checked="" type="checkbox"/>
15	2012/09/28	BRadc		Pollution	pollution	<input checked="" type="checkbox"/>
14	2012/09/28	Niaal	Non-Compliance	Testing	Testikon	<input checked="" type="checkbox"/>
13	2012/09/27 11:00 PM	Deang	Other	This is a test of the deployment of the Data capture.	Click	<input checked="" type="checkbox"/>
12	2012/09/05 12:53 PM	gg	gg	gg	gg	<input checked="" type="checkbox"/>

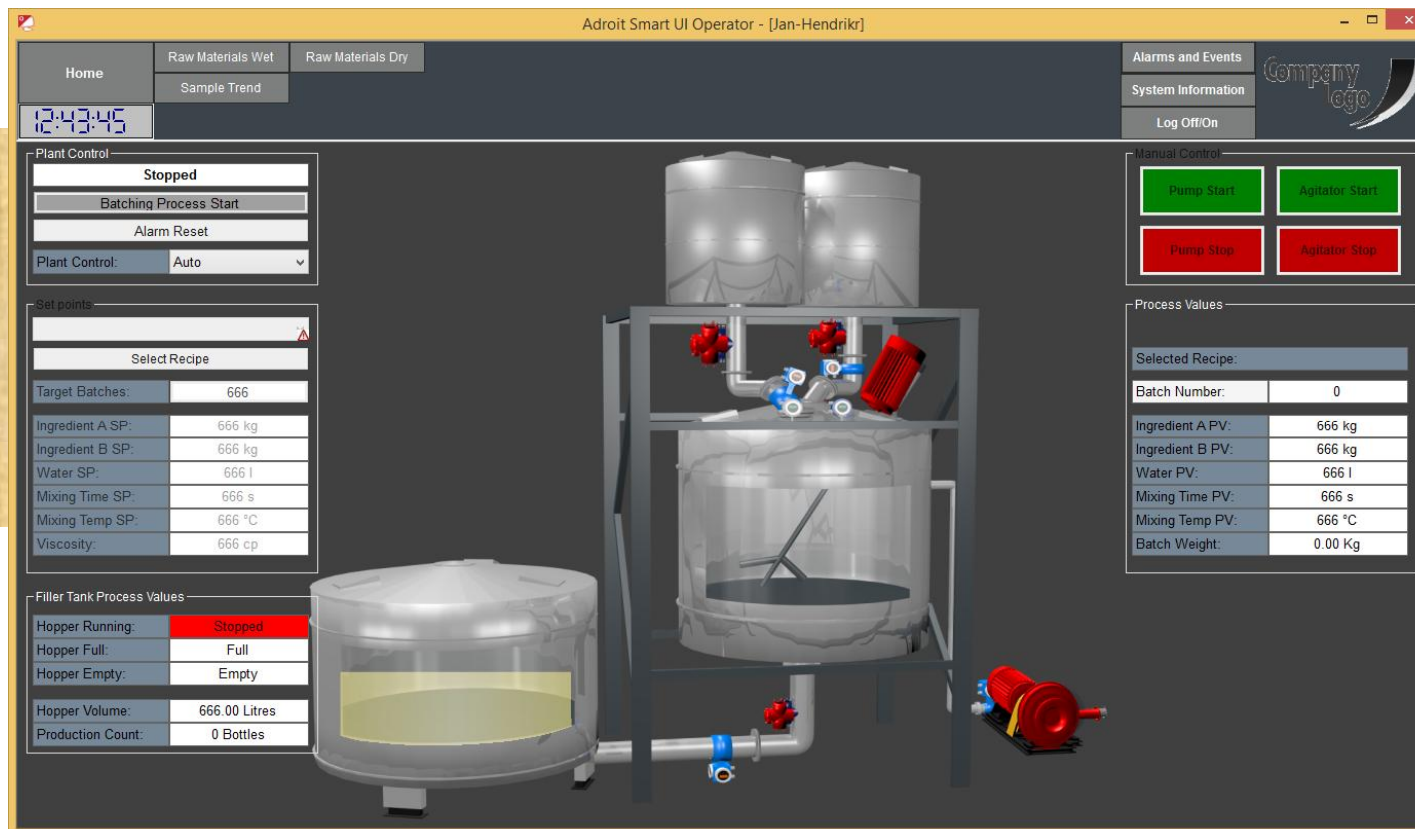
Tinahely Water – Pumping Station Dual 55.0KW Pumps

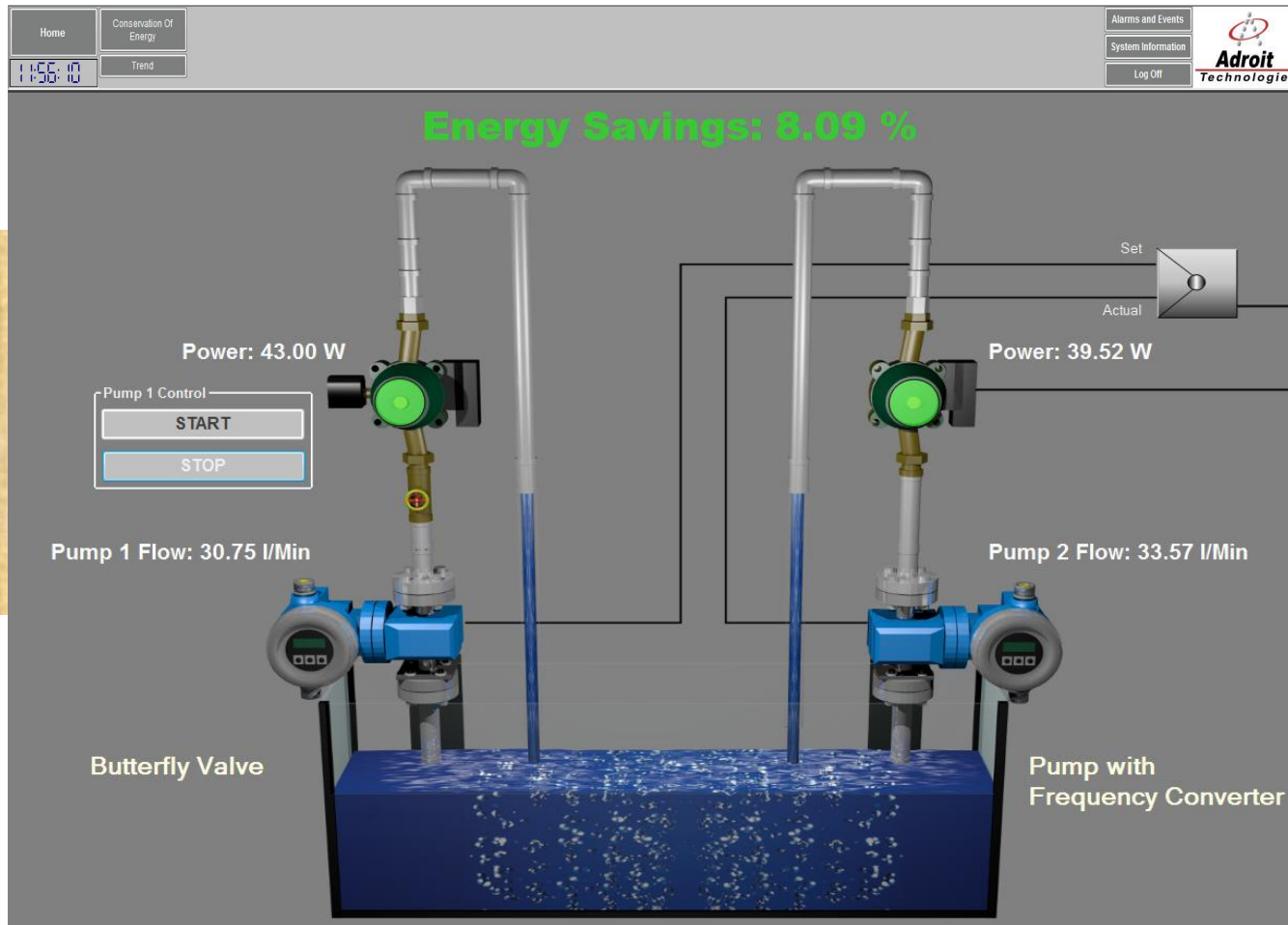


Tinahely Waste Water Treatment Plant – Monitoring Only



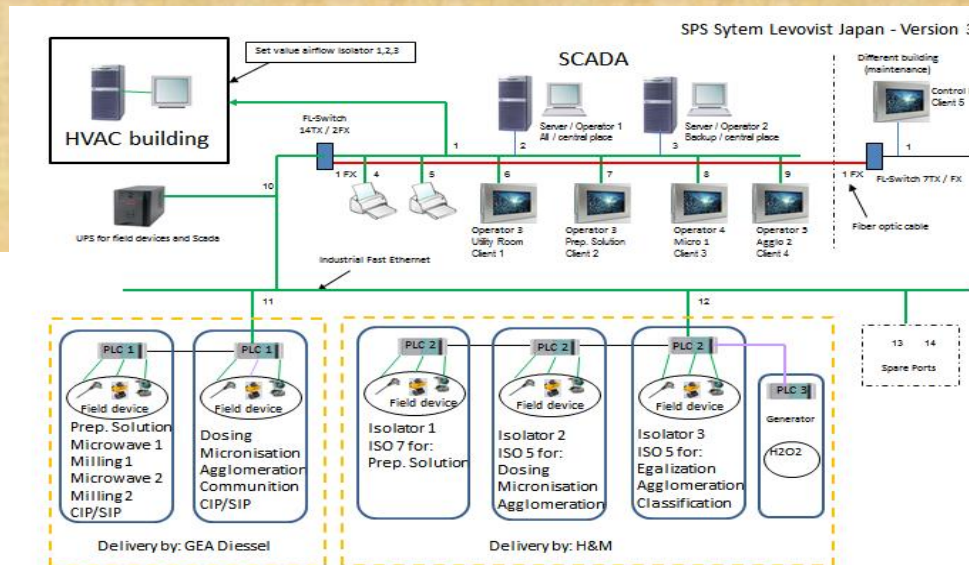
Ongoing Project, NDA signed...





- Project System Integrator is Gea Diessel (using Siemens normally),
- End customer is Bayer Schering,
- Application will be delivered to Japan
- Project on-going, to be completed in July

- Real MAPS Project
- 300 Valves
- 100 Analogs
- 20 PID Control loops
- 2 Q26QnUV PLC systems
- CC-Link network
- 12 Inverters
- 2 Redundant MAPS Servers
- 7 MAPS Clients



The MAPS software suite offers one platform to configure all MAPS software packages, from MAPS HMI, MAPS SCADA and the whole MAPS Life-Cycle software suite.

No additional software install is required and the system can easily be upgraded to the next level of MAPS.



Benefits of using MAPS

- Built on 25 years of experience
- Real Time Software (No compilation, Online Configuration)
- Flexible Object Oriented
- Client Server Architecture
- Most internal Agents included – only pay for scanned I/O
- Driver Library of over 100 front-end devices included



MAPS SCADA - Add power and resources as required

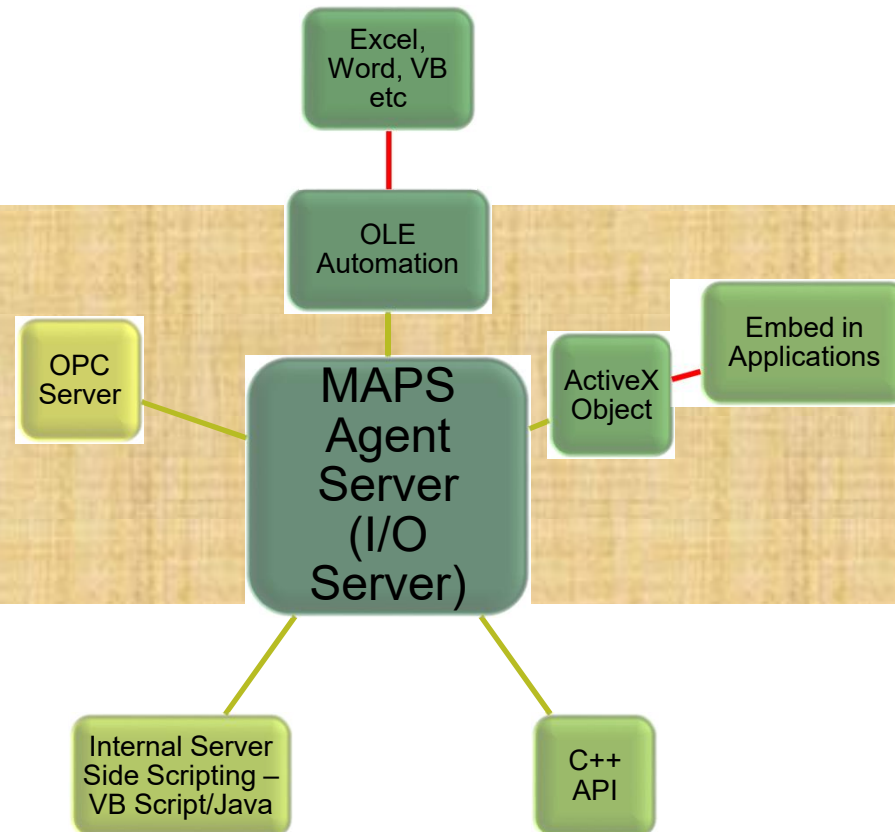
- Scalable Product Range
 - 30, 75, 150, 300, 750, 1500, 2500, 5000, 25000, System unlimited Scan Points. If you need to upgrade, pay the difference
- Various configurations available:
 - Stand Alone
 - Distributed Architecture
 - Redundant Active Clustering
- Group and Site Wide Licensing Agreements

MAPS HMI

- IPC / Standalone solution, limited functionality)
- available since April 2014, very competitive pricing!
- 300/750/1500 Scan point versions, max. two remote clients

- Some Functions Supported

- Add Tag
- Delete Tag
- Get Value of Tag
- Set Value of Tag
- Get History of Tag
- Scan/Alarm Tag



MAPS STAND ALONE ARCHITECTURE



**MAPS Designer,
MAPS Operator and
Agent (I/O) Server
on the same machine**

**Ethernet TCP/IP
Communication**



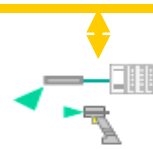
**Mitsubishi Electric
System Q and L**



**Mitsubishi Electric
FX3 / FX5**



Rockwell



SNMP

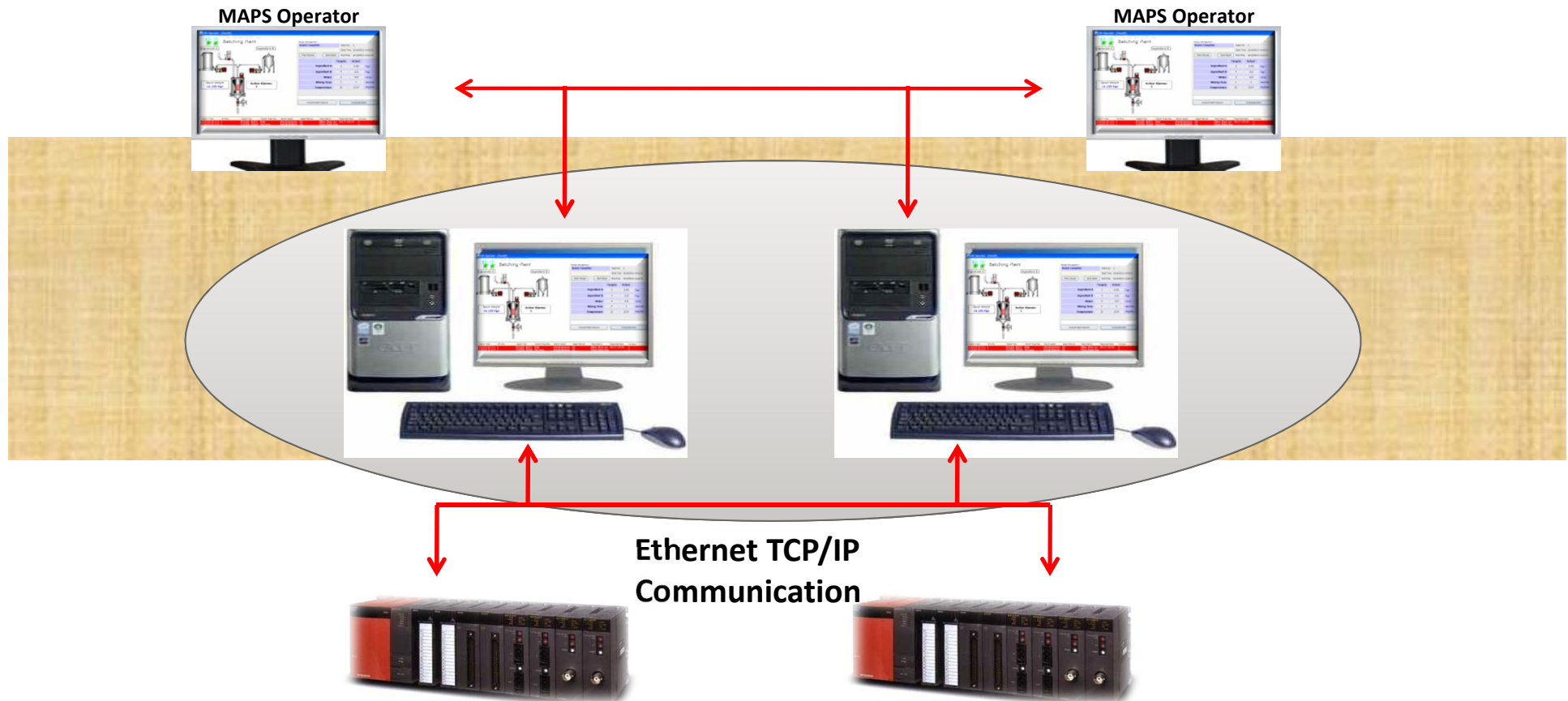


Barcode

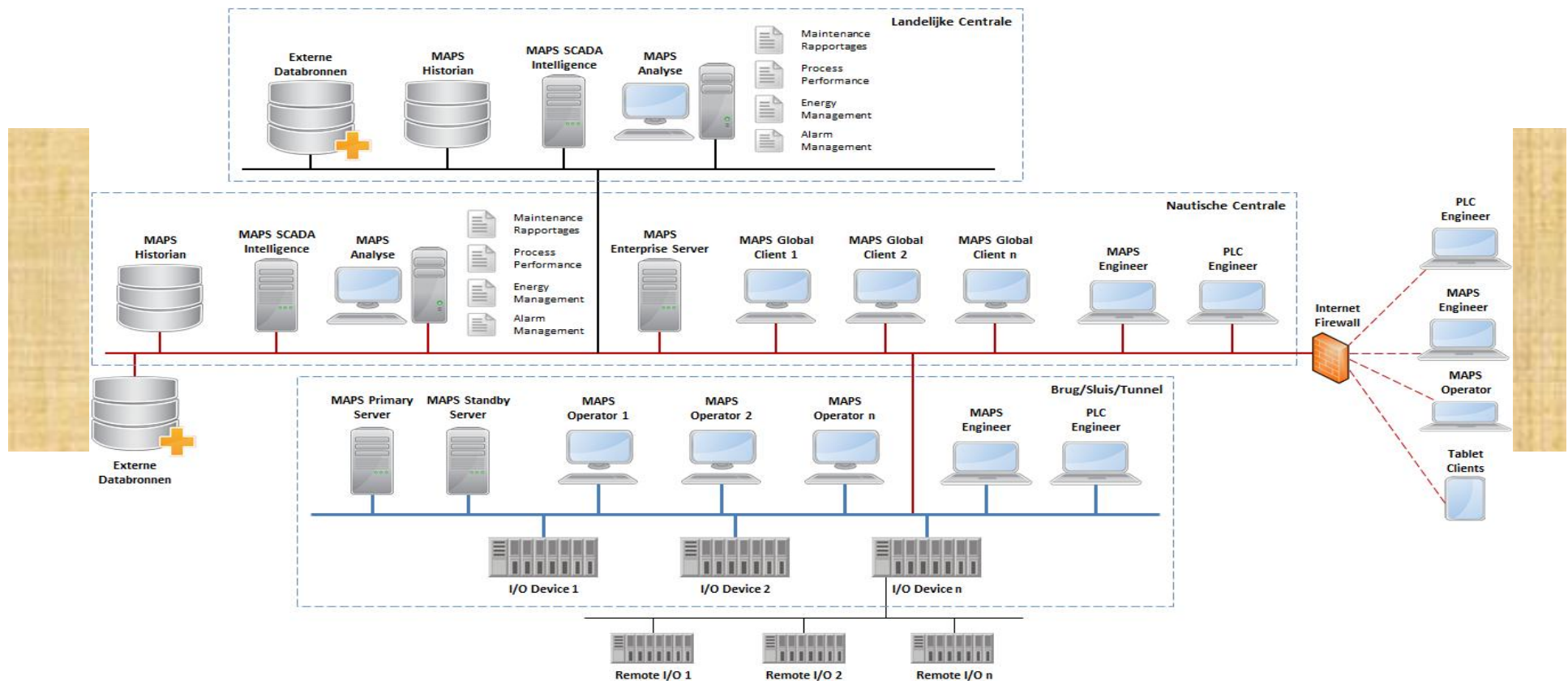


RTU / Others

MAPS HOT STANDBY ARCHITECTURE



MAPS DISTRIBUTED ARCHITECTURE



MAPS Designer



MAPS Operator



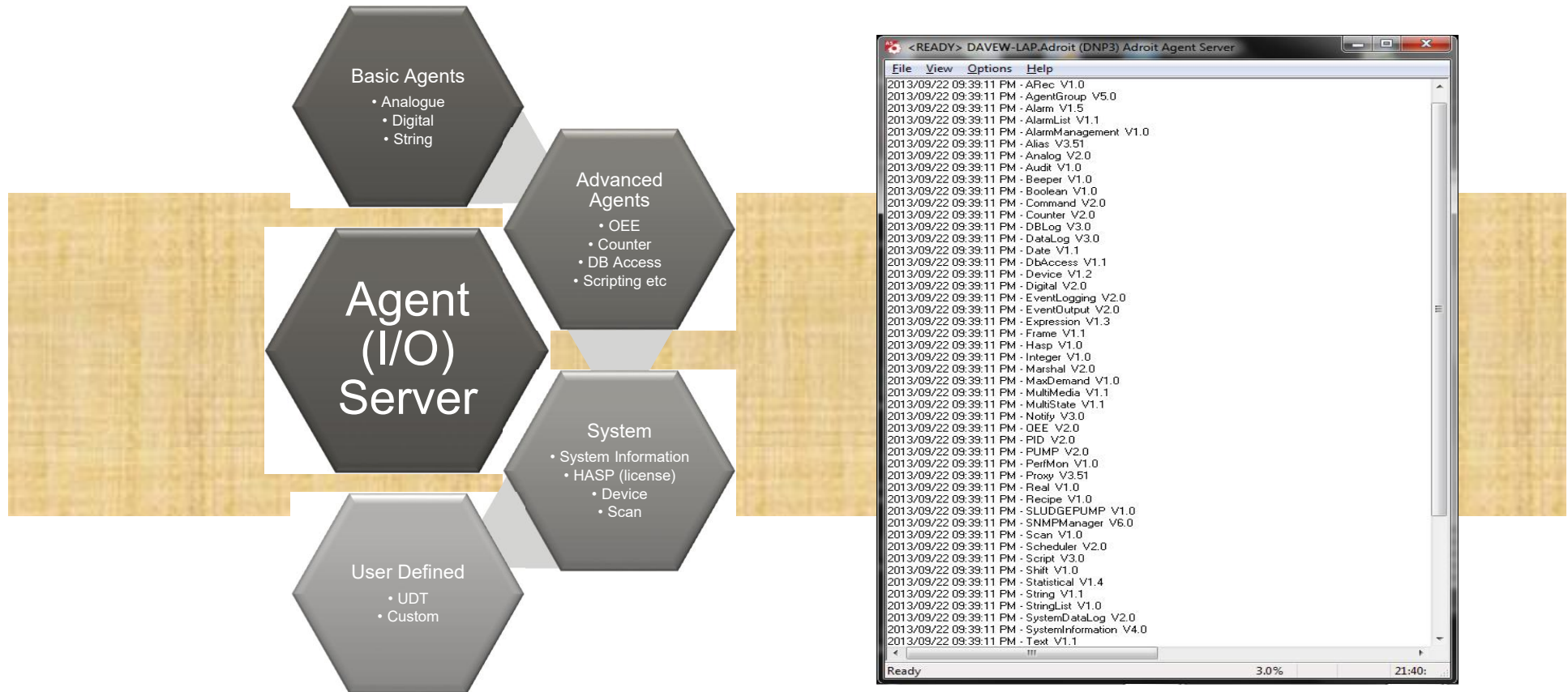
MAPS Graphic and Data Server

**Agent
Server**

MAPS Agent (I/O) Server

**Agents / Tag Database
Scanning
Logging
Alarm**





More than 45 different Agent types

MES/MIS Capabilities within standard SCADA product

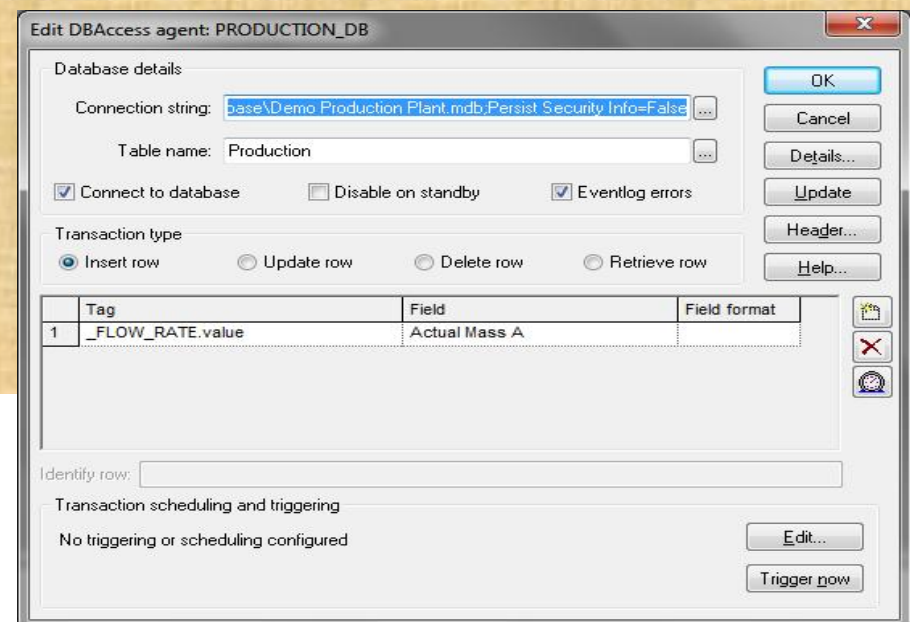
- Scripting Agents
- DBAccess Agents
- Counter Agent
- Statistical Agent
- Max Demand Monitoring Agent
- OEE/KPI Agent
- Shift Agent

Benefits from using this Agent

- Connect to most known databases using OLEDB compliant databases
- Update Data in Tables
- Read Data from Tables
- Delete Data in Tables
- Retrieve Data from Tables

Transact based on time, trigger tag or both

**Ideal for Production,
Recipe, Batching
Systems**



Benefits from using this Agent

- Measure Overall Equipment Effectiveness (Availability x Performance x Quality)
- Measure two KPI values against one another (Tons/hr)

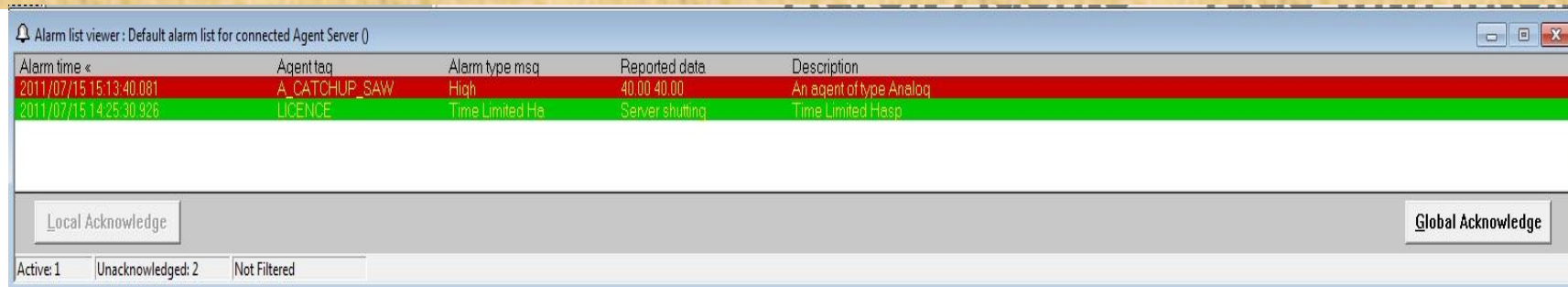
Ideal for Production Performance Management

[illegible]

Advanced logging – local historian and/or SQL

- **ODBC/OLE DB** – Bi-directional connectivity to external databases through our OLE DB Datasource
- **Adroit historical logs (.LGD)** - data from all Adroit historical logs can be extracted in a Comma Separated Variable (CSV) format
- **Log Sets** - Multiple Log Sets and resolution possible
- **DB Access Agent** (Recipe Handling Example)
- **DB Log Agent** (SCADA Reporting Data Format)
- **No Scripting or SQL Queries required**

- Global and Local Alarm Acknowledgement
- Custom Alarm Types (Intruder, Scan Inhibited etc.)
- Alarm Routes and Lists (Configure Alarm Hierarchies)
- Delays
- Conditional expressions
- Log Alarm/Event to SQL
- Audio devices
- SMS, Email
- Priority Levels



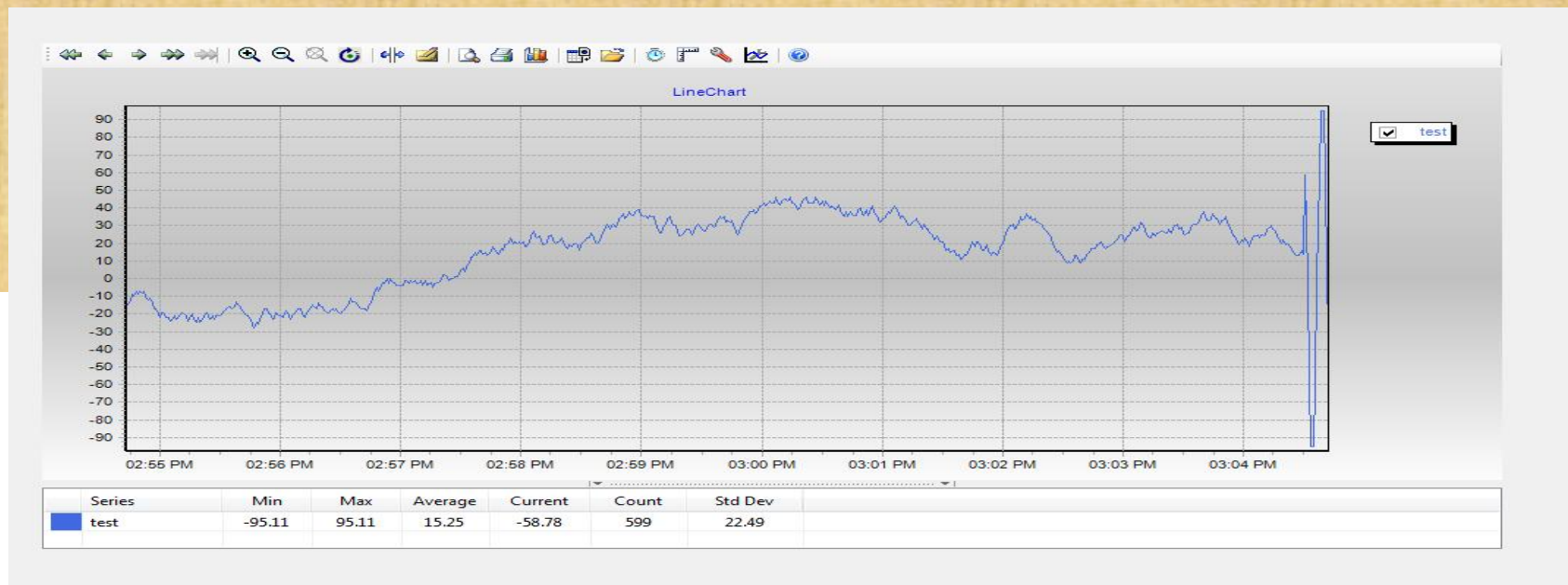
Alarm list viewer: Default alarm list for connected Agent Server ()

Alarm time «	Agent tag	Alarm type msg	Reported data	Description
2011/07/15 15:13:40.081	A_CATCHUP_SAW	High	40.00 40.00	An agent of type Analog
2011/07/15 14:25:30.926	LICENCE	Time Limited Ha	Server shutting	Time Limited Hasp

Local Acknowledge Global Acknowledge

Active: 1 Unacknowledged: 2 Not Filtered

- View historical and real time values
- Unlimited pens per window
- Print to file or printer
- Export to Excel, XML, HTML
- Importing of historical trend data



Benefits

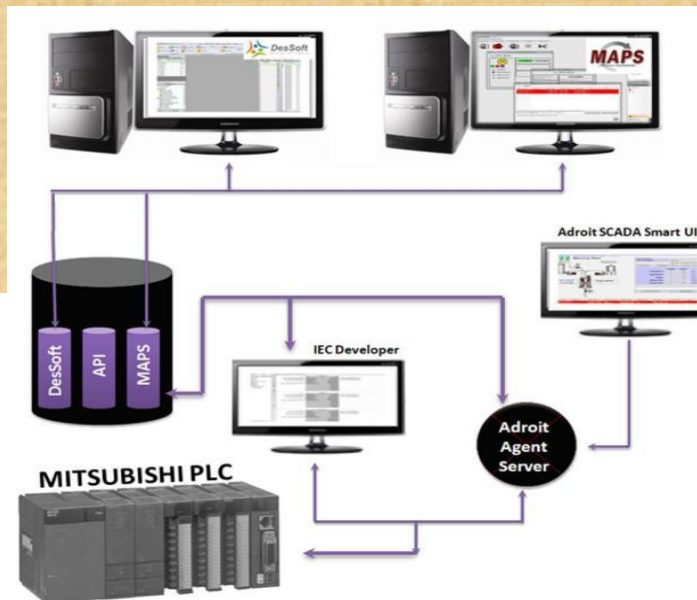
- Easy and Intuitive Interface
- Combine vectors and controls to build HMI graphics
- More than 300 graphical objects
- Wizards and Templates – minimise engineering time
- Add 3rd Party Controls – ActiveX or Windows Controls, WPF
- Configuration rather than scripting
- Import XAML Vector graphics



What is MAPS?

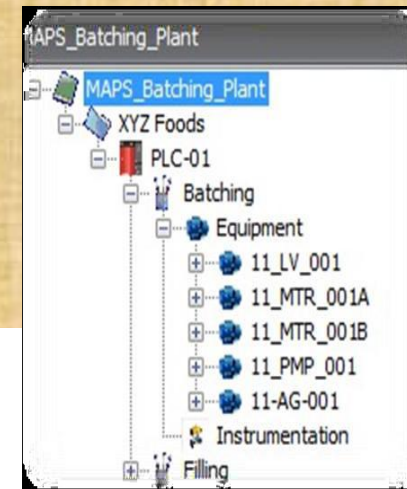
MAPS is a collaboration between Adroit Technologies and Mitsubishi focused around offering an integrated PLC/SCADA programming and management tool.

MAPS is using an intelligent BULK CONFIGURATION PROCESS that creates SCADA and the GX Works2 PLC2 program for the Plant equipment automatically!



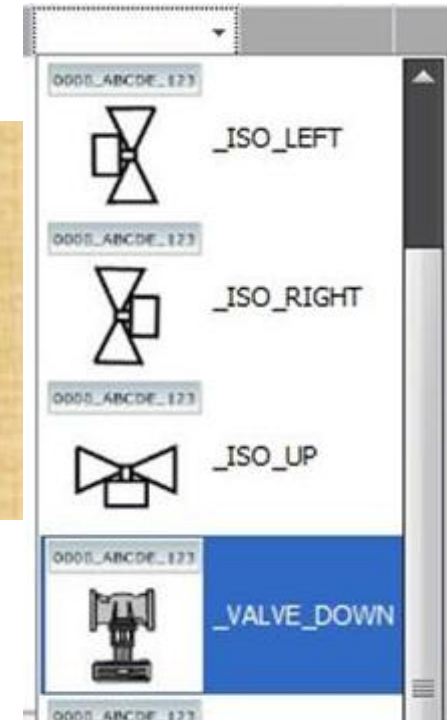
Benefits

- Drawings, documentation and changes made are kept synchronized and up to date
- Fully developed in the MS .net environment
- Uses ISA 88/95 Standards and pre-defined IEC Function Blocks
- Single point of configuration
- On-going life cycle management
- Automatically generated PLC and SCADA projects
- Automatically generated reports



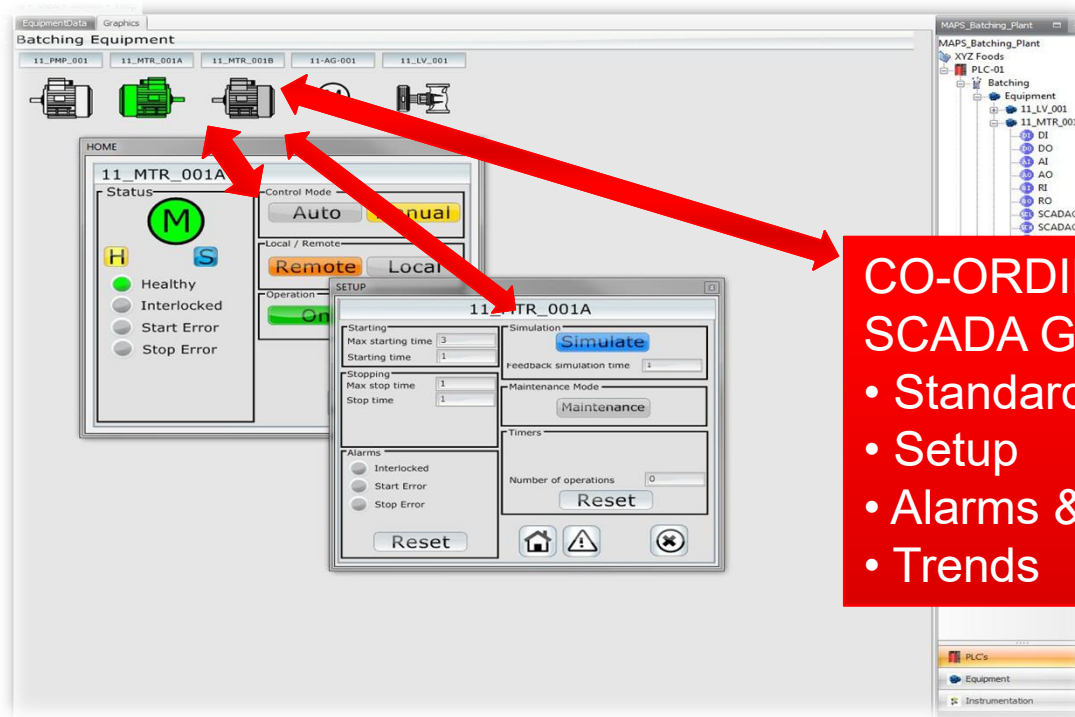
SCADA functionality delivered with MAPS

- All tags associated with FB's
- All mimics in structured format containing selected graphic objects.
- Logging, Alarming and Trending set-up using templates
- The ability to add custom mimics in the same structured hierarchy
- Each graphic object has associated faceplates to deliver further management capability



Fully integrated SCADA, PLC solution based on the well proven Mitsubishi PLC and Adroit SCADA system

Auto Generate all Graphics and Faceplates for Control, Alarming, Simulation and Maintenance



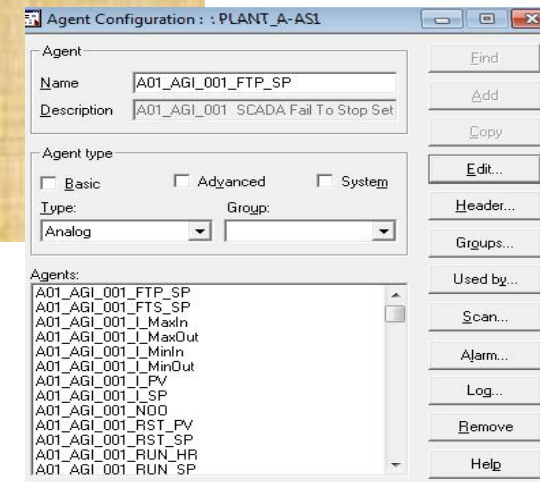
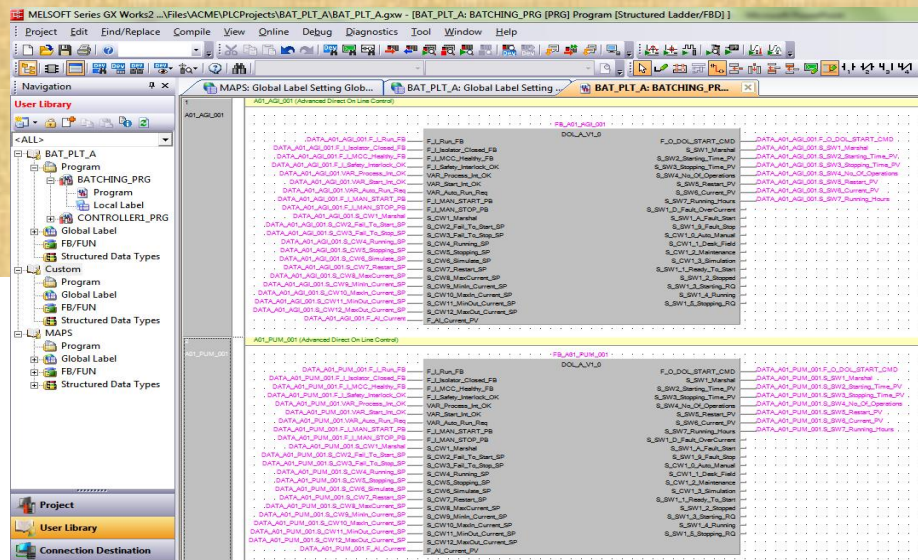
MAPS
LIFE-CYCLE ENGINEERING

**CO-ORDINATED PLC FB's AND
SCADA GRAPHICS**

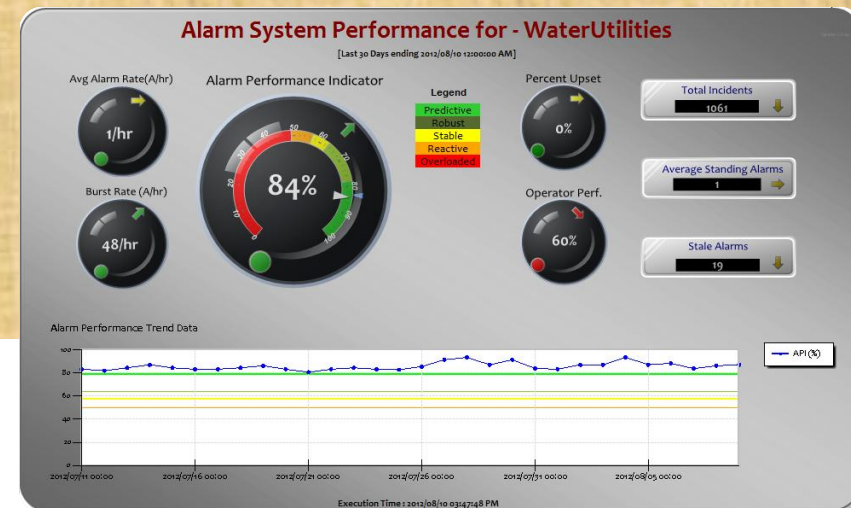
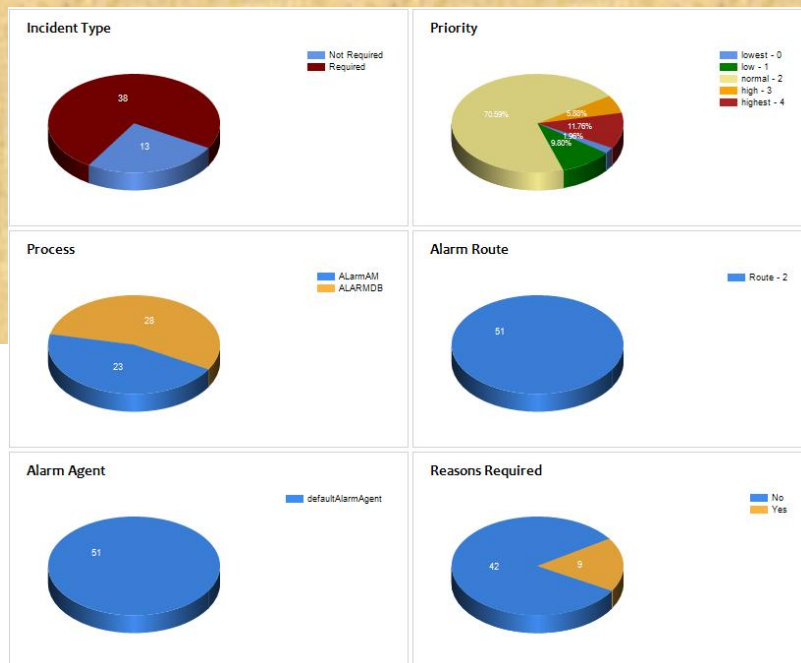
- Standard faceplate
- Setup
- Alarms & Events
- Trends

Fully integrated SCADA, PLC solution based on the well proven Mitsubishi PLC and Adroit SCADA system

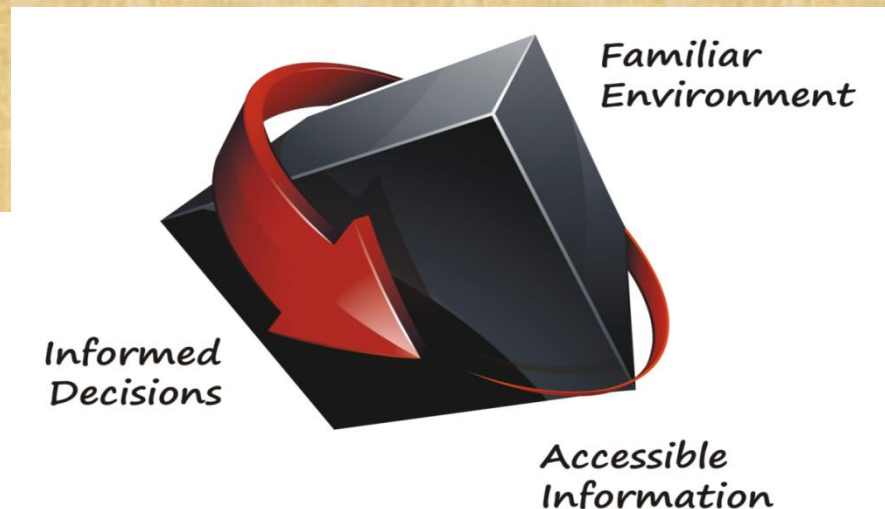
Auto Generate all the PLC Function Blocks, SCADA database and PLC-SCADA Communication



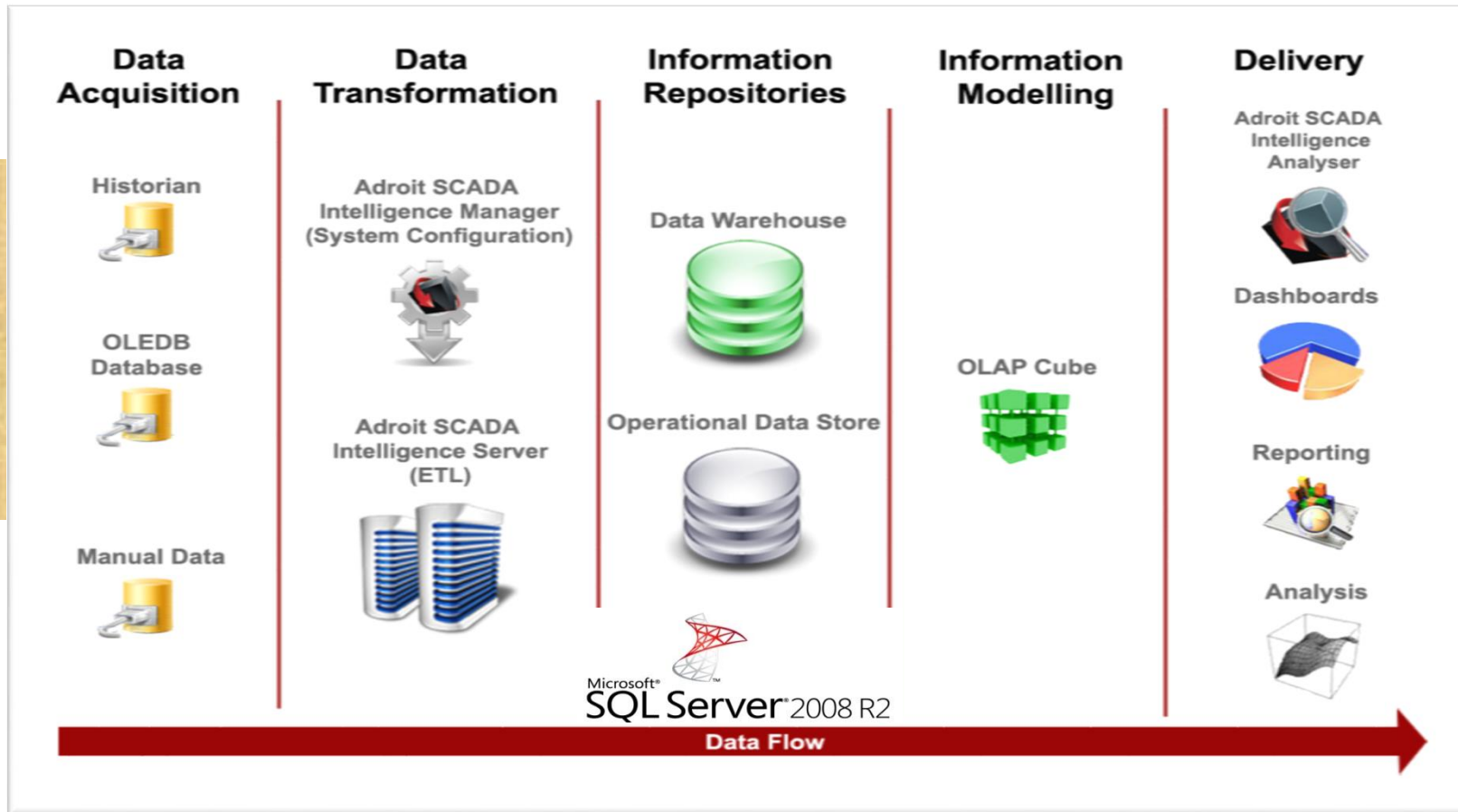
Users can still license the powerful Alarm Management Agent and then use the Alarm Management Reporting capability of the web-based Alarm Management Reports product. Keep track of alarm performance in your plant for optimum production.



ASI is data warehousing system which collects and processes data from disparate *data sources* and makes the resulting information available on a common platform to enable **decision making**.



SCADA Intelligence Architecture



Adroit SCADA Intelligence Manager - 3.0.0.0

Main | **Items Configuration** | Data Warehouse

Default | Hierarchies | Detail | Grouping | Import | Export | Re-Configure Historically

View Options | Configuration Utilities

Work Units

☐ Main Filter

Work Unit	Work Units ...	Work Unit D
Filler 1	N/A	
Filler 2		

Sites
Areas
Work Centres
Work Units
Equipment

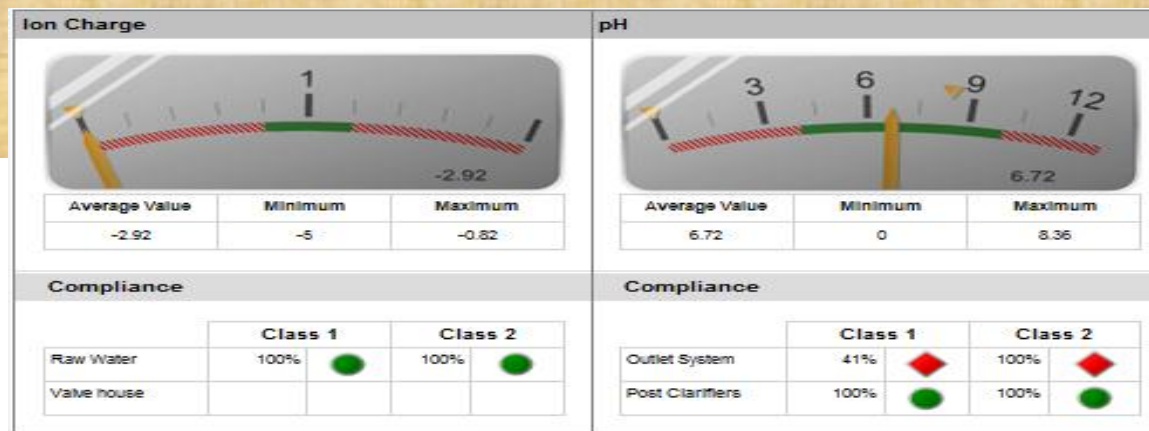
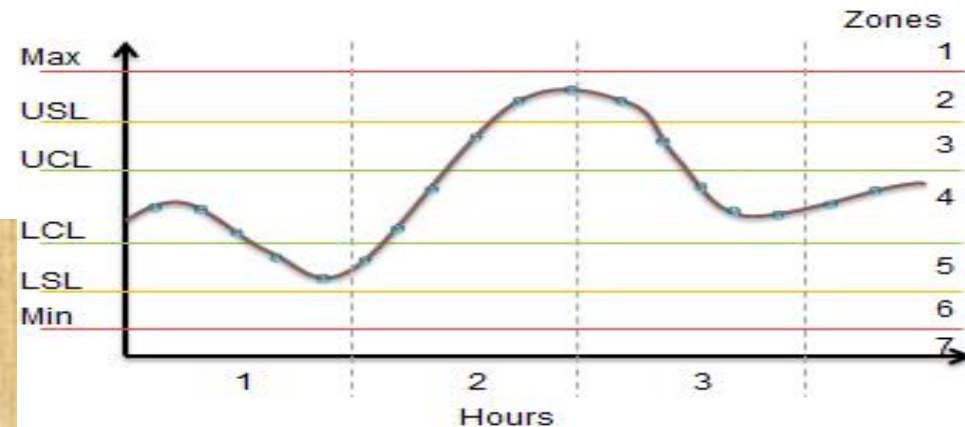
Analog Items

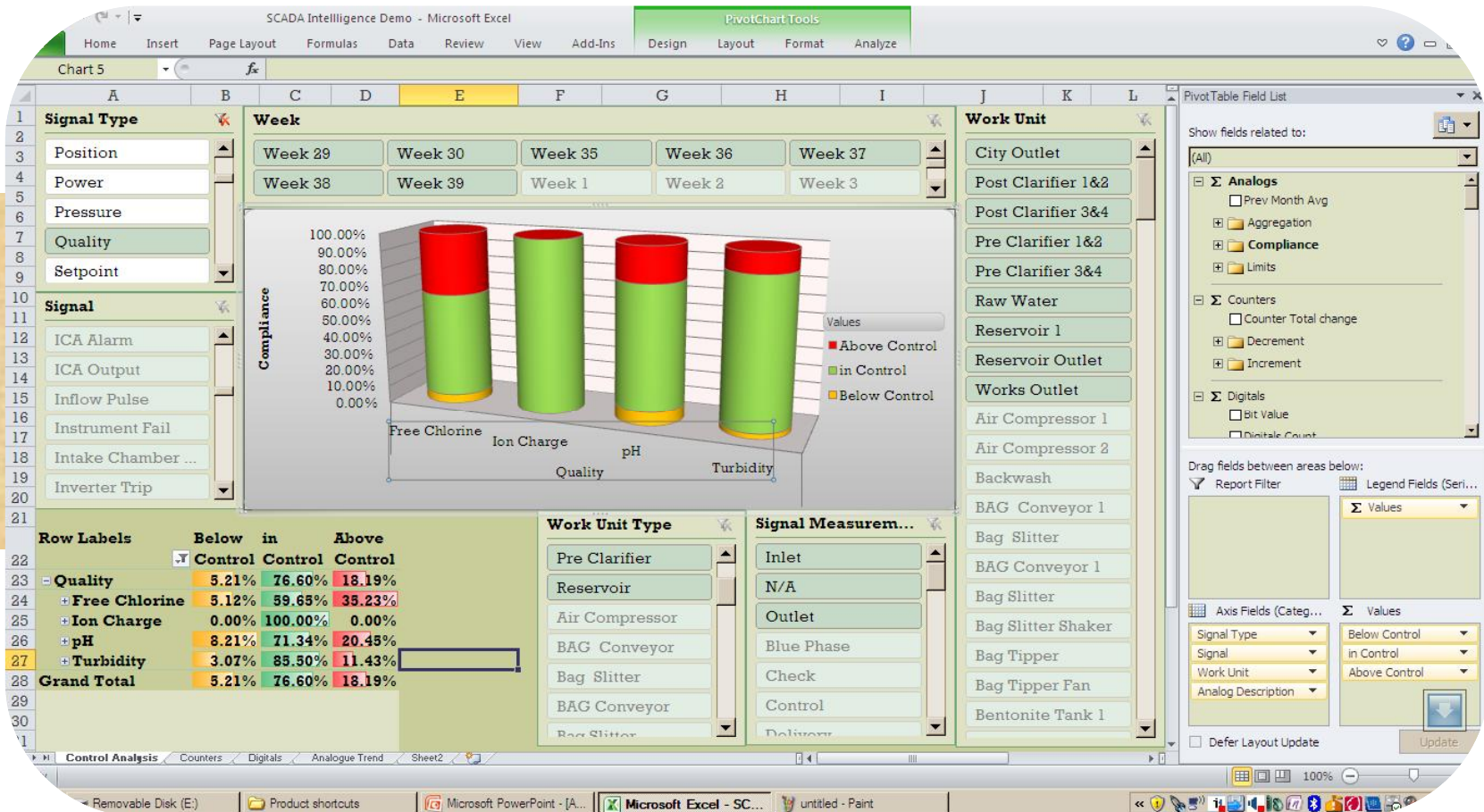
Tag Name	Description	Work Unit	Work
ACT_BATCH_TEMP.VALUE	Actual Temperature of Batch	Batching Plant	N/A
ACT_DISCHARGE_TIME.VALUE	Actual Time to Discharge	Batching Plant	N/A
ACT_MASS_ING_A.VALUE	Actual Mass of Ingredient A	Batching Plant	N/A
ACT_MASS_ING_B.VALUE	Actual Mass of Ingredient B	Filler 1	N/A
ACT_MASS_WATER.VALUE	Actual Mass of Ingredient A	Batching Plant	N/A
ACT_MIXING_TIME.VALUE	Actual Mixing Time	Batching Plant	N/A
BATCH_NO.VALUE	Batch Number as given by PLC	Batching Plant	N/A
DISCHARGE_RATE.VALUE	Discharge rate	Batching Plant	N/A
FIL_ACT_FILL_HEIGHT.VALUE	Actual Fill Height	Filler 1	N/A
FIL_CURR_FILL_HEIGHT.VALUE	Current Fill Height	Filler 1	N/A
TARGET_BATCH_TEMP.VALUE	Target Temperature of Batch	Batching Plant	N/A

Record 8 of 16

Server : LOCALHOST:9777 | Site : ProcessShowDemo | User : malcolmh

- Define Limits
 - Control &
 - Specification
- Compliance Summaries
 - % In Control
 - % In Specification
- Drive exception based reports





Production Summary Report



Production Summary

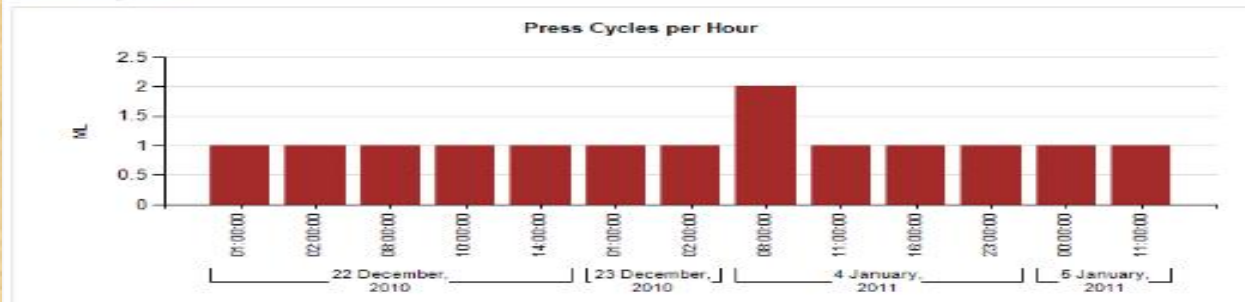
Date From: 2010/12/22 12:00
Date To: 2011/01/05 12:00:00

Description: Flow values for the selected period grouped by Service, Site and Signals.

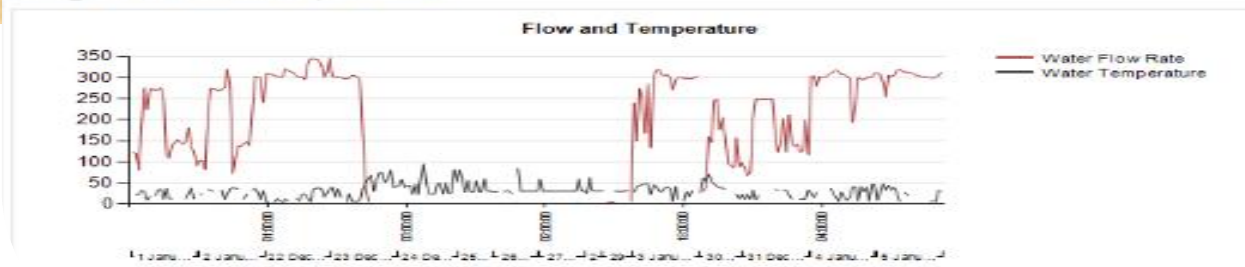
Conveyor Production Summary

	Reef	Waste
Afternoon Shift	60	152
Morning Shift	65	114
Night Shift	347	140

Press Cycles



Fridge Flow and Temperature



Signal	Count	Average Value	Maximum	Minimum
Water Flow Rate	150820	64.58	341.3	0
Water Temperature	4635	14.46	33.3	-3.7

Production Summary



Key Performance Indicators (KPIs)

Home > Demo Reports > High Level Summary

1 of 1 100% Find | Next

ASI High Level Summary (KPI)

Region: All

Date from: 1/1/2011
Date to: 2/25/2011

Battery Management											
MTD						Last Day					
February 2011						25 February, 2011					
Battery Efficiency	Trend	Battery Voltage	Trend	Load Factor	Trend	Battery Efficiency	Status	Battery Voltage	Status	Load Factor	Status
63.38	→	47.22	→	54.73	→	183.33	▲	50.22	▲	55.77	▼
63.38	→	47.22	→	54.73	→	183.33	▲	50.22	▲	55.77	▼
78.30	→	46.91	→	102.14	→	100.00	▼	49.89	▲	59.89	▼
54.92	→	47.50	→	51.30	→	100.00	▼	50.48	▲	119.78	▲
76.84	→	47.26	→	45.33	→	233.33	▲	50.37	▲	12.15	▼
43.17	→	47.23	→	18.13	→	300.00	▲	50.13	▲	31.25	▲

* MTD (Month to date) trend indicator - Indicates the movement of the month to date average when comparing to the previous month.

* Trend indicator - Indicated the movement of the average signal for the last 7 days against the current value

High Level Summary

1

Report generated at 5/21/2012 4:11:13 PM

•Thanks a lot for your attention!

